



MEDICAL \* EMERGENCY \* RESPONSE \* EQUIPMENT & TECHNOLOGY

BUILT FOR THE PROFESSIONAL

# OMNI™ PRO

## BLS/ ALS Total System (TS2 Ready™)

The OMNI™ PRO BLS/ALS Total System is built for the professional, built to help you rapidly and proficiently deploy medical care during critical moments and save lives. Built from the strongest materials and a smart design, and the versatility to modify to your requirements, the OMNI PRO™ delivers a customizable and organized solution for your equipment with options. The OMNI™ PRO is the foundation for a system of **TS2 Ready™** bags that are interchangeable, allowing you to attach additional **TS2 Ready™** modules to the bag's sides depending on your requirements.



### AVAILABLE TS2 READY™ MODULES



AIRWAY Intubation  
Tri-Fold Module  
M5001A



NARKIT Drug Module  
M5001B



External access to O<sub>2</sub>, can also be secured closed

**TS2 Ready™** for up to 4 removable DEEP STUFF Pockets, 2 removable STICKIT STRIPS, or combinations of both  
1 DEEP STUFF pocket, 2 STICKIT Strips included

Hideaway adjustable, padded, contoured yoke backpack strap harness system easily distributes weight for maximum comfort

Adjustable sternum and waist belt, lumbar support

Secure-closed O<sub>2</sub> access panel

Add the M5001X to add an MJD or MD O<sub>2</sub> cylinder

Increased size to support All-In-One VIPR O<sub>2</sub> systems

Customized internal main compartment using SLIDERS™ System

Zippered internal mesh compartments

OneView™ technology – all main compartments open completely in front of first responder



Red

Tactical Black

Black Infection Control

Red Infection Control



M5001F



M5001TB



M5101



M5101F



Fill Pack Module  
M5001C



MPFO™ PRO EMS  
Multi-Purpose  
Fold Out Module  
M5001E



# RECOVER™ PRO

## O<sub>2</sub> Response Bag (TS2 Ready™)

The RECOVER™ PRO O<sub>2</sub> Response Bag is built to help you rapidly and proficiently deploy emergency oxygen during critical moments and save lives. Similar to the OMNI PRO™, the RECOVER PRO™ is the foundation for a system of TS2 Ready™ bags that are interchangeable, enabling you to attach additional TS2 Ready™ modules to the bag's sides depending your requirements. Packed with features, the RECOVER™ PRO oxygen backpack system delivers the quality, reliability, and functionality you expect when you're called into action.



Product Dimensions:  
16.5" (at bottom) 11" (at top) x 22.5" x 7.75"  
Product Weight: 4lbs 15oz standard,  
5lbs 11oz infection control  
M4L Lifetime Warranty

### AVAILABLE TS2 READY™ MODULES



AIRWAY Intubation  
Tri-Fold Module  
M5001A



NARKIT Drug Module  
M5001B



Exterior gurney attach buckles

Hideaway adjustable, padded, contoured yoke backpack strap harness system easily distributes weight for maximum comfort

COMFORT-GRIP carry handles on sides of bag

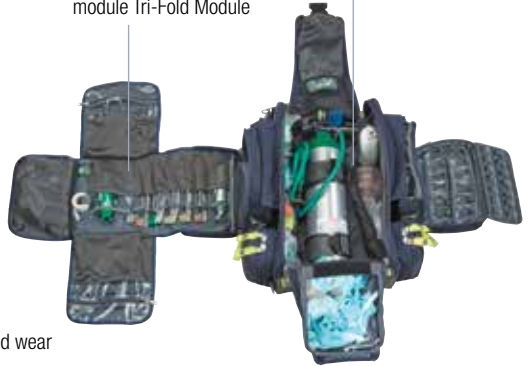
Adjustable sternum strap

Padded lumbar support

Adjustable waist belt



Durable bottom skid runners



Interior elastic mesh pockets

Optional AIRWAY module Tri-Fold Module

TPE lined back and bottom resists water and wear

Red

Tactical Black

Black Infection Control

Red Infection Control



M5008F



M5008TB



M5108



M5108F



Fill Pack Module  
M5001C



MPFO™ PRO EMS  
Multi-Purpose  
Fold Out Module  
M5001E





# MULE™ PRO

(Multi Use Large Equipment) Response Bag (TS2 Ready™)

The all new MULE™ PRO is the perfect BLS/ ALS bag for the first responder who wants an organized solution for their equipment with options. The MULE™ PRO is the foundation for a system of TS-Ready™ first responder bags that are interchangeable, enabling the first responder to attach additional, optional modules to the bag's sides depending on the team's requirements. The MULE™ PRO Total System provides you an organized solution to rapidly access the tools you need to save lives.

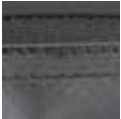
Field tested roller bag with durable telescoping extension handle

Constructed from incredibly durable, waterproof, wipe-clean black tarpaulin

TS2-Ready™ hideaway zippers support up to 4 optional side modules

Reflective Paneling

Double stitching on all stress points



Three external pockets for quick access

All compartments have air dry capability

Inner foam construction maintains shape and protects contents

YKK Super Tough zippers and pullers

Reflective logos

Removable unit/ contents identification sleeve



Product Dimensions: 15" x 24.5" x 10.5"  
Product Weight: 10lbs 3oz standard  
M4L Lifetime Warranty

## AVAILABLE TS2 READY™ MODULES



AIRWAY Intubation  
Tri-Fold Module  
M5101A



NARKIT Drug Module  
M5101B



Dual internal zippered mesh pockets

TS2 Ready™ for up to 2 removable DEEP STUFF Pockets, 4 removable STICKIT STRIPS, or combinations of both 1 DEEP STUFF pocket, 2 STICKIT Strips included



COMFORT-GRIP carry handles on sides of bag



Customized internal main compartment using SLIDERS system

Zippered internal mesh compartments

Center securing panel with 3 pockets



Increased size supports All-In-One VIPR O<sub>2</sub> systems

Add the M7003X conversion kit to add an MD or MJD O<sub>2</sub> cylinder



Optional protective travel sleeve (p/n M5107-PC)



Fill Pack Module M5101C



# PRB3+™ PRO

## Personal Response Bag (TS2 Ready™)

The PRB3+™ PRO Personal Response Bag delivers a smaller, more mobile organized solution for your equipment with a lot of expansion options. Similar to its bigger brother the OMNI™ PRO, the PRB3+™ PRO is a smaller backpack and the foundation for a system of **TS2 Ready™** bags that offers customizable internal compartments with the ability to add up to 3+ optional **TS2 Ready™** modules, allowing you to more than double the capacity. In addition, the PRB3+™ has a MOLLE fitted front panel to attach a 4th **TS2 Ready** module or any MOLLE compatible gear. The PRB3+™ PRO Personal Response Bag is built for the professional, built to help you rapidly and proficiently deploy medical care during critical moments and save lives.

COMFORT-GRIP embroidered carry handles on top of bag



Double stitching on all stress points

Metal matte silver finished hardware

YKK Super Tough zippers and pullers

TS2 Ready™ for up to 3 modules

PVC lined bottom resists water and wear

Add a 4th module to the front molle

All compartments have air dry capability

Incredibly durable 1680/1200 Denier coated TPE, water and stain resistant

Inner foam construction maintains shape and protects contents

TS2 Ready™ hideaway zippers to attach optional side modules

Reflective Paneling



Product Dimensions: 10.5" x 18" x 12.5"  
Product Weight: 4lbs 6oz standard  
M4L Lifetime Warranty

### AVAILABLE TS2 READY™ MODULES



AIRWAY Intubation  
Tri-Fold Module  
M5001A



NARKIT Drug Module  
M5001B





Adjustable, padded, contoured yoke backpack strap harness system easily distributes weight for maximum comfort

Vented/ padded back for breathable comfort

Dual side mesh pockets



Internal securing panels with elastic and zippered mesh pockets

OneView™ technology – all main compartments open completely in front of first responder

Red



M5002F

Black Infection Control



M5102



Fill Pack Module  
M5001C



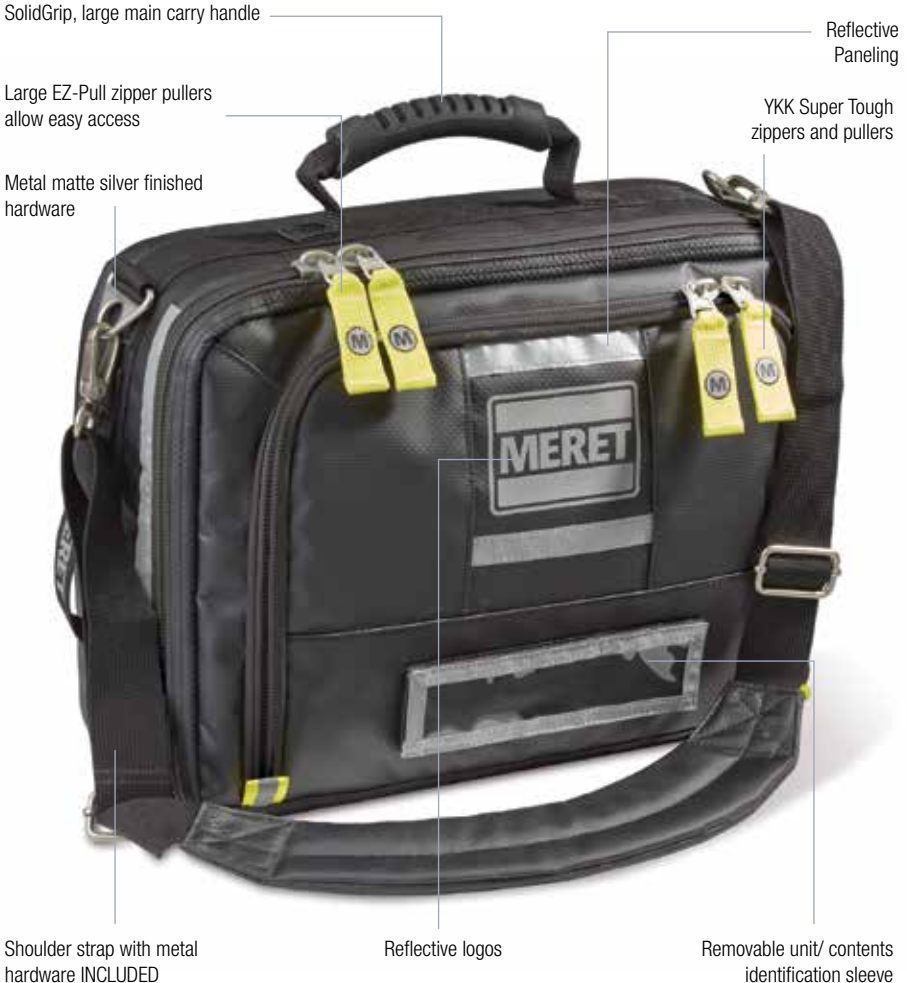
MPFO™ PRO EMS  
Multi-Purpose  
Fold Out Module  
M5001E



## G2™ PRO

### Grab 2 Go Quick Aid System

**The G2™ PRO is the perfect BLS bag for the first responder who wants a small but very organized solution for their equipment.** As a miniature version of the popular OMNI PRO™ the G2™ PRO offers the same customizability but in a smaller briefcase style design. The G2™ PRO provides you an organized solution to rapidly access the tools you need to save lives.



Product Dimensions: 15" x 12" x 6"  
Product Weight: 4lbs 3oz standard infection control  
M4L Lifetime Warranty

Zippered internal mesh compartments



All compartments have air dry capability



Front compartment organizes offices supplies and small gear

TS2 Ready™ for up to 2 removable DEEP STUFF Pockets, 2 removable STICKIT STRIPS, or combinations of both 1 DEEP STUFF pocket, 2 STICKIT Strips included.



Customized internal main compartment using mini-SLIDERS™ System



# FIRST-IN™ PRO

## Sidepack System (TS2 Ready™)

The **FIRST-IN™ PRO Sidepack** is a hands-free solution, ergonomically designed for use as a sidepack or shoulder/cross-body bag and built to take in what you need when you arrive on-scene. Built from the strongest materials and a smart design, and the versatility to modify to your requirements, the FIRST-IN™ PRO delivers a lightweight solution that can carry and organize all of your basic supplies and protective equipment to address immediate patient needs until additional assistance arrives.



Product Dimensions: 7.25" x 12.5" x 5"  
Product Weight: 1lb 12oz standard  
M4L Lifetime Warranty

### AVAILABLE TS2 READY™ MODULES



AIRWAY Intubation  
Tri-Fold Module  
M5001A



NARKIT Drug Module  
M5001B



- Internal mesh pockets
- Customized internal main compartment using SLIDERS™ System
- Tape flip-outs™
- Shoulder strap with metal hardware included



- Padded lumbar support
- Quick-pull zipper tubes for easy, fast opening
- Hideaway adjustable, padded, waist straps

Red

Tactical Black



M5010F



M5010TB



Fill Pack Module  
M5001C



MPFO™ PRO EMS  
Multi-Purpose  
Fold Out Module  
M5001E





# RES-Q SLING™ PRO • SRT PROPack™



## RES-Q SLING™ PRO

M7001

The RES-Q SLING™ PRO Search and Rescue Sling Pack provides a unique hands-free minimalist sling design that gets you and your gear into tight spaces when lives depend on it. The RES-Q SLING™ PRO offers versatility for confined space rescue teams, tactical response teams, and emergency search and rescue teams. The sling pack design fits diagonally across your body, taking up minimal space while offering significant storage and access to supplies.



Quick deployment with adjustable fit

Multiple zippered pockets

Can be easily removed to care for patients in extreme situations

Low profile design ideal for rescue/drag/ lift/ carry situations

Scissor pockets

Secures to belt

Ideal for carrying IV Starting supplies, medications to BLS vitals, first aid treatment supplies

Product Dimensions: 28" (half-length adjustable) x 3" x 5.25"  
Product Weight: 2lbs 3 oz standard

## SRT PROPack™

M5014

The SRT PRO™ Search and Rescue Team Pack is built for the professional, built to support your search and rescue field operations while also serving as a great daypack for your daily commute or weekend getaway. Built from the strongest materials and a smart design, the SRT PRO™ is the perfect daypack whether you're on the job or off for some fun.



Large internal compartment

Dual external mesh pockets

Attach a module with front molle

Dedicated, padded 15" laptop compartment

Hydration pack ready

Incredibly durable 1200 Denier coated TPE, water and stain resistant

Smaller front compartment organizes office supplies and small gear

Breathable padded mesh back



Product Dimensions: 17.5" x 6.5" x 11.5"  
Product Weight: 2lbs 4oz standard

**GO2 PRO™**  
M5003

**The GO2™ PRO O2 Response Bag is built for the professional, built to help you rapidly and proficiently deploy emergency oxygen during critical moments and save lives.** Built from the strongest materials and a smart design, the GO2™ PRO is the no nonsense solution to grabbing and carrying your portable oxygen supply.

Multiple outlets for tubing/ high pressure hoses

Comfort-Grip carry handle on side of bag

No window version also available

Shoulder strap ready

**GO2 PRO™**  
M5003-F-NW

Product Dimensions: 21" x 5.5" x 8.5"  
Product Weight: 2 lbs standard



**TUFF STUFF™**  
M5012M



Easy access to all equipment

Shoulder strap included

Double EZ-Pull webbing straps

Incredibly durable 1200 Denier, water and stain resistant

Exterior mesh pockets

**TUFF STUFF™**  
M5012M-F



**The TUFF-STUFF™ PRO Duffel is built for the professional, built tough, in fact we think it's the strongest stuff-it duffel...ANYWHERE.** Built from the strongest materials and a smart design, this duffel is over-constructed for superior strength and easy access to a large internal compartment.

Product Dimensions: Outside Dimensions: 15" x 21" x 9.5"  
Product Weight: 3lbs 7oz

# PPE™ PROPack • X2™ PRO • REDIV™ PROPack

## PPE™ PROPack M5011

The PPE PROPack™ is built for the professional, built to help you easily carry and deploy infection control precaution supplies during critical moments and save lives. Built from the strongest materials and a smart design, the PPE PROPack™ delivers a very compact, hands free kit with a lot of capacity.

Pen/light pockets

1200 Denier

Carries N95 masks, shoe/head covers, eye protection, protection spray, hand sanitizer, EZ access gloves, and more.

Product Dimensions:

6.25" x 4.5" x 1"

Product Weight: 7oz standard



Scissors Pocket

Belt clip/loops



M5011F

M5011TB

M5111



## X2™ PRO M5001L

This carryall module has one inner long elastic mesh pocket on one side and two inner smaller elastic mesh pockets on the other side. The longer side fits most major brands of cervical immobilization collars, head blocks, CID's, and devices to secure your patients to long spine boards. CPAP ventilation circuits, commercially designed intraosseous devices, IV start kits, BP Cuffs, splinting devices, bag valve masks, and medications can all fit into the different pockets. By attaching the X2™ DOUBLE FILL to the M.U.L.E., you can secure all your disaster, triage, MCI and accountability supplies into one module without having to look through multiple bags when time is critical. An optional shoulder strap is sold separately.

EZ-Grab embroidered carry handles

Incredibly durable 1200 Denier coated TPE, water and stain resistant

Shoulder strap ready

OneView™ technology – all main compartments open completely in front of first responder

Product Dimensions: 6.25" x 20.5" x 4.75"

Product Weight: 11b 2 oz standard



TS-Ready™ zipper tracks attach to M7003/ M4700

Large EZ-Pull high-vis Super Tough YKK zippers and pullers allow easy access

Unit/ Contents identification sleeve

PVC lined bottom resists water and wear

Compact and lightweight

## RED-IV™ PROPack M5109

The all new RED-IV™ PROPACK is equipped to handle ACLS, CCT, and all field conditions requiring an IV.

Product Dimensions: 10.25" x 5"

Product Weight: 4oz standard



Infection control tarpaulin

3 vacutube pockets

IV starter kit storage

Hypothermia ready

250 ml - 1000 ml IV bags

# MODQUAD™ PRO • TURNOUT™ PRO • IV MED™ PRO

## MODQUAD™ PRO M5700

The MODQUAD™ PRO Module Carrying System makes the most of your MERET TS2 Ready™ modules by expanding their versatility and allowing you to create your own response system. The MODQUAD™ PRO integrates up to 4 TS Ready™ modules and converts them into a shoulder bag that can also be carried briefcase style.



- Shoulder strap with metal hardware INCLUDED
- COMFORT-GRIP carry handle on top
- Inner rigid construction maintains shape
- Super Tough YKK zippers for optional side modules
- Supports up to 4 TS-Ready™ modules
- Incredibly durable, water proof, advanced black tarpaulin suitable for infection control environments
- Product Dimensions: 8.5" x 22" x 1.25"
- Product Weight: 1lb 9.6oz standard

## TURNOUT™ PRO M5012L-F

The all new TURNOUT™ PRO FIRE is the only duffel specifically designed and built by firefighters to properly store and carry both structural and wildland turnout gear between firehouses or between jobs. This monster sized bag will carry your helmet, Nomex™ jacket, bunker pants, gloves, boots, standby clothing for emergency and USAR type response teams, and even has an inside lockable pocket for your personal valuables.

Interior lockable personal valuables pocket

End-to-end carry handles

Shoulder strap INCLUDED

Reflective piping for scene safety

Incredibly durable 1680/ 1200 Denier coated TPE, water and stain resistant

Removable exterior unit/ contents identification sleeve



Now available in Tactical Black

Easy access to all equipment

Includes tarpaulin product cover/ personal carrying tote

Double EZ-Pull reinforced webbing straps

Exterior mesh pockets

Product Dimensions: 22" x 20.5" x 19"  
Product Weight: 4lbs 12oz

## IV MED™ PRO M5001DP2-IV

The IV MED™ PRO was designed for advanced life support medics as both an IV start kit for adults/ pediatrics as well as a medications kit. Currently being used by major metropolitan EMS teams and FIRE departments, this kit delivers what you need in an organized pack that fits securely inside the OMNI PRO.

Elastic expansion bands hold various size medications, tourniquets, and IV start supplies

Large EZ-Pull pullers allow easy access

Custom MERET zippers

Attaches to inner panel of the OMNI PRO

Built from materials that can be cleaned easily to remove blood borne pathogens



Constructed from incredibly durable wipe-clean black tarpaulin

Internal mesh compartments

OneView™ technology- all main compartments open completely in front of first responder

Machine washable, drip dry only

Product Dimensions: 8.5" x 16" x 1.5"  
Product Weight: 12.8oz



MEDICAL \* EMERGENCY \* RESPONSE \* EQUIPMENT & TECHNOLOGY

 **EVERYTHING**  
**YOU NEED** IN AN EMERGENCY

[www.spservices.co.uk/meret](http://www.spservices.co.uk/meret)

01952 288 999

[sales@spservices.co.uk](mailto:sales@spservices.co.uk)